

TrueBlue ordering information

TrueBlue

TrueBlue mask with exhalation port	Size	Part number
TrueBlue mask	P	1071838
TrueBlue mask	S	1071839
TrueBlue mask	M	1071840
TrueBlue mask	MW	1071841
TrueBlue mask	L	1071842

TrueBlue mask without exhalation port

TrueBlue mask SE	P	1071843
TrueBlue mask SE	S	1071844
TrueBlue mask SE	M	1071845
TrueBlue mask SE	MW	1071847
TrueBlue mask SE	L	1071848

TrueBlue replacement parts

Replacement cushion set	Size	Part number
TrueBlue nasal cushion and flap	P	1071861
TrueBlue nasal cushion and flap	S	1071862
TrueBlue nasal cushion and flap	M	1071863
TrueBlue nasal cushion and flap	MW	1071864
TrueBlue nasal cushion and flap	L	1071865

TrueBlue gel forehead pad	-	1071888
TrueBlue headgear (reduced size)	-	1071874
TrueBlue headgear	-	1071875
TrueBlue headgear clips (2/pack)	-	1071877
TrueBlue sizing gauge	-	1071878



TrueBlue sizing

For best results use the sizing gauge, designed to determine the correct mask size.

Choose from five sizes **P, S, M, MW, L**.

Contact us

Philips Healthcare is part of Royal Philips Electronics

Respironics UK
Philips Home Healthcare Solutions
Chichester Business Park
City Fields Way, Tangmere
Chichester, West Sussex
PO20 2FT

Respironics United Kingdom
+44 800 1300 845

Please visit www.philips.co.uk/respironics for more information



©2012 Koninklijke Philips Electronics N.V. All rights reserved.
Philips Healthcare reserves the right to make changes in specifications and/or to discontinue any product at any time without notice or obligation and will not be liable for any consequences resulting from the use of this publication.

Respironics, DuoPack, FitPack, and TrueBlue are trademarks of Respironics, Inc. and its affiliates.

MLUK00087 Issue 1 * FEB 2012



TrueBlue

- Effective
- Appealing
- Comfortable

www.philips.co.uk/respironics

PHILIPS
RESPIRONICS
sense and simplicity



TrueBlue

- Effective
- Appealing
- Comfortable

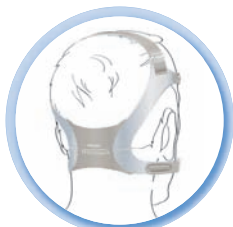
The mask is a crucial determinant of Positive Airway Pressure (PAP) treatment acceptance. Common reasons for non-adherence include pressure intolerance and issues related to the mask, such as facial discomfort, skin injury, and significant air leaks.¹

The TrueBlue mask combines the best-in-class gel material and Auto Seal technology to allow for an immediate seal with fewer adjustments.

TrueBlue: Truly Revolutionary.

Effective

EZ Peel tabs allow for quick, easy fitting and adjustment



The original TrueBlue headgear has inlaid adjustable straps that converge into a single back panel with a crown strap for added stability, extra comfort and free movement.

A **snap-on clip** at each side allows for simple fitting night after night without unnecessary adjustments.

Angled exhalation micro ports make performance quieter and redirect air away from the bed partner.

The faceplate's **bellows design** follows the patient's movement during sleep, providing good stability throughout the night.

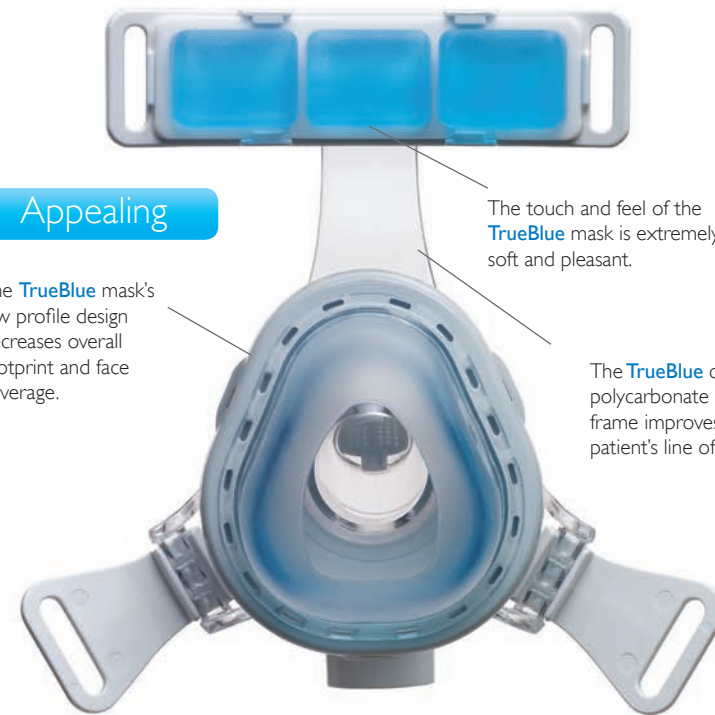
Reference
1 Elliott. The interface: crucial for successful noninvasive ventilation. Eur Resp J 2004

Appealing

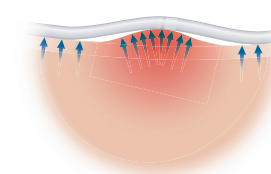
The TrueBlue mask's low profile design decreases overall footprint and face coverage.

The touch and feel of the TrueBlue mask is extremely soft and pleasant.

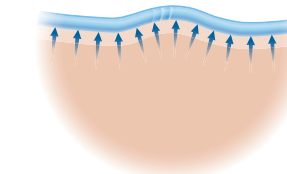
The TrueBlue clear polycarbonate frame improves the patient's line of sight.



Comfortable



Traditional mask design is known to create uncomfortable pressure points.



The silicone spring, gel cushion and silicone membrane of TrueBlue create a system that yields greater comfort.



TrueBlue gel helps prevent leaks by better conforming to the bone structure and contour of the face.



Our **premium blue gel** provides extra stability and is thinner and lighter than ever before.

The ultra-thin, form-fitting outer support **silicone membrane** creates an effective, self-adjusting, leak-free seal.