



PHILIPS

 **VOLCANO**

Program

Guiding tomorrow's
innovation. **Today.**

EuroPCR 2016, Paris, 17-20 May - Palais Des Congrès de Paris

Guiding tomorrow's innovation. **Today.**

By focusing on the people at the heart of cardiovascular care, we help you effectively target the needs of your patient population across the health continuum.

As a leader in Image Guided Therapy, we are committed to partner with you to improve treatment for every patient.

Our vision is to provide integrated solutions that advance minimally invasive procedures by helping you to decide, guide and confirm the right therapy for the right patient at the point of care. Working together to realize this vision, we can save and improve lives and reduce the total cost of care by making therapy more efficient, more appropriate and more personal.

Join our **Training Village** and take part in a **Case in Point** session and a **Symposium** that explore our innovations in more detail.

**Come and celebrate
125 years of Philips
at our booth with free
healthy cocktails.
#Philips125**

Visit our
booth
M71



Training Village program

Sponsored by Philips Volcano

Tuesday 17 May

Time	Session title	Speakers	Room
12:00-13:00	EchoNavigator	P. Biaggi, R. Corti	R4
13:00-13:30	EchoNavigator Hands-on	P. Biaggi, R. Corti	R5
14:00-15:00	IVUS Image Interpretation	A. Banning, E. Infante De Oliveira, J. Ligthart, G. Werner	R4
15:00-16:00	IVUS Image Interpretation Hands-on	A. Sharp	R5
15:30-16:30	IVUS in Complex Cases	J.M. De La Torre Hernandez, J. Legutko, G. Werner	R4
16:30-17:30	IVUS in Complex Cases / Co-registration Hands-on	A. Sharp	R5
17:00-18:00	EchoNavigator	P. Biaggi, R. Corti	R4
17:30-18:00	Open Hands-on Training	Philips Volcano	R5

Wednesday 18 May

Time	Session title	Speakers	
09:30-10:30	IVUS Image Interpretation	A. Banning, E. Infante De Oliveira, J. Ligthart, G. Werner	R4
10:30-11:30	IVUS Image Interpretation / Co-Registration Hands-on	A. Sharp	R5
11:00-12:00	Physiology Challenging Cases	J. Davies, F. Hellig, E. Van Belle	R4
12:00-13:00	Physiology Challenging Cases Hands-on	Philips Volcano	R5
12:30-13:30	EchoNavigator	P. Biaggi, R. Corti	R4
13:30-14:30	EchoNavigator Hands-on	P. Biaggi, R. Corti	R5
14:00-15:00	Physiology Disparity	J. Escaned, R. Petraco, A. Sharp	R4
15:00-16:00	Physiology Disparity Hands-on	Philips Volcano	R5
15:30-16:30	Physiology from Justification to Guidance	J. Escaned, F. Hellig, S. Sen	R4
16:30-17:30	Physiology from Justification to Guidance Hands-on	Philips Volcano	R5
17:30-18:00	Open Hands-on Training	Philips Volcano	R5

Thursday 19 May

Time	Session title	Speakers	
09:30-10:30	EchoNavigator	P. Biaggi, R. Corti	R4
10:30-11:00	EchoNavigator Hands-on	P. Biaggi, R. Corti	R5
11:00-12:00	Physiology Disparity	J. Escaned, R. Petraco, A. Sharp	R4
12:00-13:00	Physiology Disparity Hands-on	Philips Volcano	R5
12:30-13:30	EchoNavigator	P. Biaggi, R. Corti	R4
13:30-14:00	EchoNavigator Hands-on	P. Biaggi, R. Corti	R5
14:00-16:00	Hands-on session - EchoNavigator	Philips Volcano	R4
14:00-17:30	Open Hands-on Training	Philips Volcano	R5

Friday 20 May

Time	Session title		
10:00-12:00	Hands-on session - EchoNavigator	Philips Volcano	R4
10:00-12:00	Open Hands-on Training	Philips Volcano	R5

**Add the individual trainings of your interest
to your calendar**

It is not possible to reserve a place in advance.

www.philips.com/EuroPCR



Case in Point session

Strategies for complex PCI treatment: optimising your procedural outcomes while managing costs through novel and innovative technologies

Sponsored by Philips Volcano

Wednesday May 18th

16:30-18:00 - @ Room 241

Faculty: A. Banning (Chair), F. Pinto (Co-chair), F. Hellig, D. Dudek, J. Escaned, T. Zeus, L. Annemans

Attend this session if you want:

To understand how physiology can help you guide, decide and confirm your treatment strategies in complex anatomy. To appraise how novel image guidance technologies can improve complex PCI procedures. To specifically discuss the health economics considerations of novel imaging and physiology driven treatment strategies.

Symposium

MitraClip™: controversies in intervention and imaging

Sponsored by Abbott Vascular - Philips

Wednesday May 18th

16:30-18:00 - @ Theatre Havane

Faculty: A. Vahanian (Chair), F. Maisano (Co-chair), M. Swaans, H. Sievert, V. Bapat, S. Von Bardeleben

Attend this session if you want:

To learn about new developments and data in mitral intervention and imaging
To learn new approaches to MitraClip™ imaging and anaesthesia.
To participate in challenging discussion on mitral intervention and imaging.

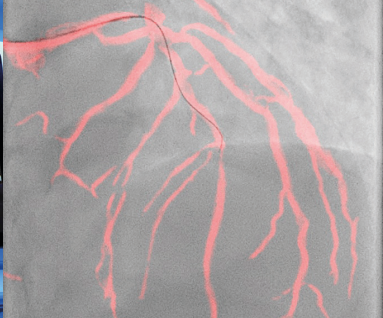
**Sign up to receive a recording
of our Case in Point session
after EuroPCR.**

www.philips.com/europcr



VOLCANO
NON GUIDED THERAPY

10.5mm
3.3mm
3.9mm



Latest innovations

iFR Scout and CORE FM

iFR Scout Pullback Technology

iFR Scout pullback technology reveals the physiological profile of the entire vessel, so when you encounter diffuse disease or serial lesions you can make informed treatment decisions. Experience also Advanced Physiology with the Versatile CORE FM System which aims at Simplifying Physiology, while Providing Choice between FFR and iFR, supported by Evidence as iFR has been studied in more than 4000 patients¹.

SyncVision Precision Guidance

Streamlined lesion assessment

SyncVision simplifies coronary vessel sizing, streamlines lesion assessment and enables precise therapy delivery.

Dynamic Coronary Roadmap²

Live Image Guidance

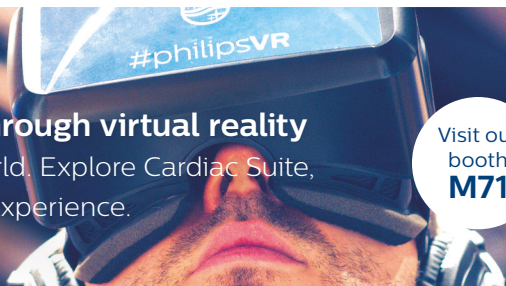
The real time dynamic, adaptive roadmap - immediately and automatically created from a coronary angiogram- for navigating devices in coronary arteries.

¹ Data on file at Volcano Corporation

² Dynamic Coronary Roadmap is considered work in progress and is not CE marked and not available for sale.

Experience cardiology through virtual reality

Stop by and enter another world. Explore Cardiac Suite, for a fully integrated cath lab experience.



Visit our booth
M71

