



The Challenges Within Plain Film. How Can Digital Imaging Help?

Rachael Hinchliffe

Plain Film Modality Lead , Advanced Practitioner Radiographer
Heartlands, Good Hope and Solihull Hospitals
Part of The University Hospital Birmingham NHS Foundation Trust
Medical Imaging Convention
27TH March 2019

University Hospitals Birmingham



Introduction

“The healthcare environment in the UK is evolving rapidly, in response to changes in political agendas, financial restraints, disease prevalence and population demographic.” RCR, SCOR (2012).

This we can suggest not only challenges care provision across the NHS nationally, and in all sectors but is applicable locally within imaging and more specifically challenge us in the provision of the plain radiographic imaging service, on both an operational and a strategic level.



Aim

Explore the main challenges, the plain film service faces, and discuss how implementing digital imaging systems can help.

What are our challenges?

Workforce

Financial

Capacity and
Demand

Political/Legislation

Social

Technological and
Infrastructure

Workforce

- Recruitment and Retention
- Training and Experience
- Professional
- Quality standards

How does implementing Digital Imaging Systems support work force issues?

- Recruitment and Retention-In our experience being able to demonstrate investment in new technologies attracts staff, and retains staff.
- Training and Experience- Senior team members operating as “on the shop floor” key trainers that dilute the perception that senior staff are locked away in offices and builds that rapport and morale .Links into training –Staff appreciate CPD and learning so developing new skills. Learning from Advanced Practitioner Radiographers.
- Supports Quality and Promotion of Professionalism.
- Staff Health and Safety

Financial

- Single biggest challenge we face not only in plain film radiography, but imaging as an NHS organisation as a whole.
- Budgets are tight ,but the political mantra remains to essentially do more with less, and still invest in staffing, technological advances, increase capacity and ensure we can support our vision to pioneer a modern and progressive imaging service.
- Creative ways to manage the plain film service delivery and reporting elements.
- **Outsourcing-Locum staff and Radiology Reporting**

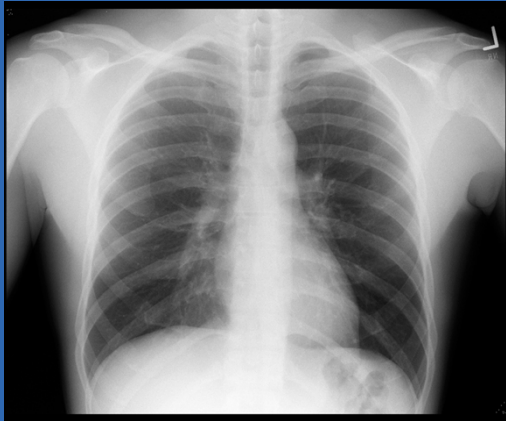
Financial

- In our experience. Our Directorate has subject to over a decade of under investment ,with Plain film being the poor relation.
- Aged equipment –Inefficient, frequent breakdowns, not user friendly. Disrupts service provision and delays patients. Costly maintenance and parts.
- Staff morale drops and additional pressures on staff. Comprehensive business case to showcase how implementing new imaging systems can in the long term save money. Deals on multiple equipment buys maintenance contracts. R&R issues decrease agency spend.



 alamy stock photo

HGBW4W
www.alamy.com



Capacity and Demand
Plain Film Reporting

Tendering Process
Support staff productivity
Skill Mix
Bespoke Areas of
practice

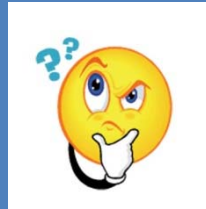
Outsourcing

Capacity
issues
240,000
annual
demand

Can Digital Imaging Reduce Outsourcing?

Bone Suppression and improvements in software algorithms may reduce rpt PF imaging

Improvements in image quality. Supports image interpretation



POSSIBLY ?

On balance workforce problem may help in a small way

Capacity and Demand- X-ray Service Delivery

- Demand Management-
- Support staff vetting-Robust knowledge protocols and confidence with vetting. Making the best use of clinical radiology iRefer (2017)
- Leads to a bottle neck, 2 weeks waits, booking patients, inefficient when lists are empty. Utilise clerical time well.
- High demand at some sites from PF –Not enough capacity-Extend working days additional lists
- Increased expectations service users ,KPIs.

W1A



The fact is, this is about us identifying what we do best and finding more ways of doing less of it better,”
Director of Better *Anna Rampton ...*

Will digital Imaging help us with some of these issues?

yes

Politics!

BREXIT



© GETTY IMAGES / GUY LAWRENCE / GUY LAWRENCE

Political

- Trust Mergers
- Challenges lie in universal equipment finding common ground. Protocols
- Target changes
- Arming ourselves with the latest equipment that can meet expectations of patients and service users.

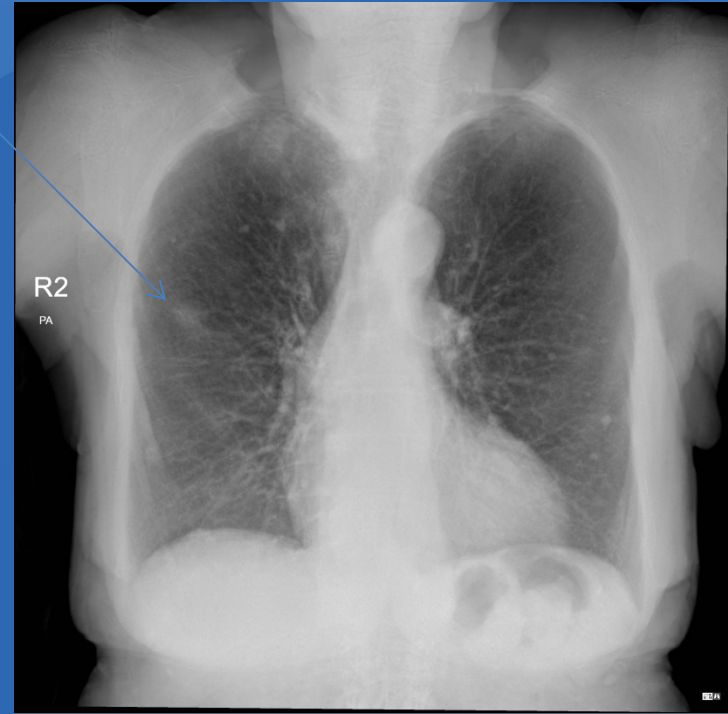
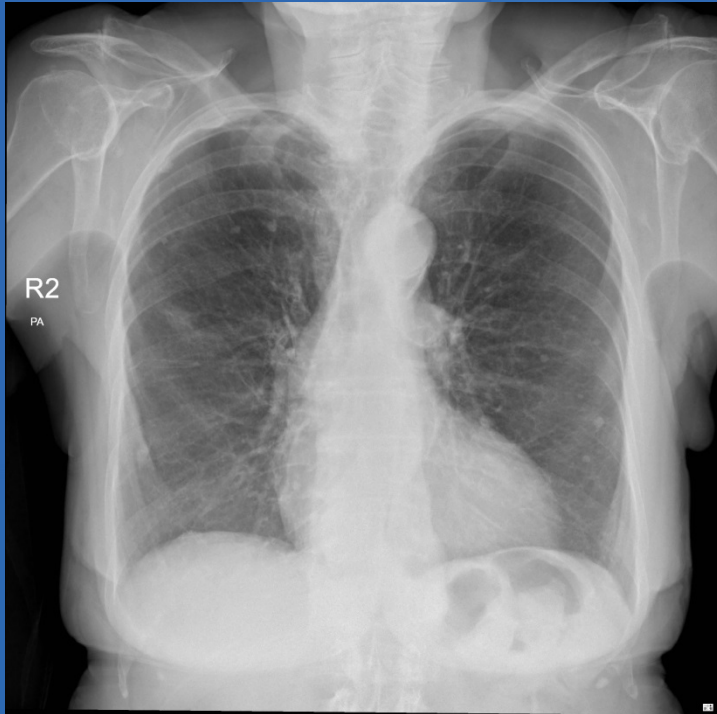


POVERTY

Case Study One



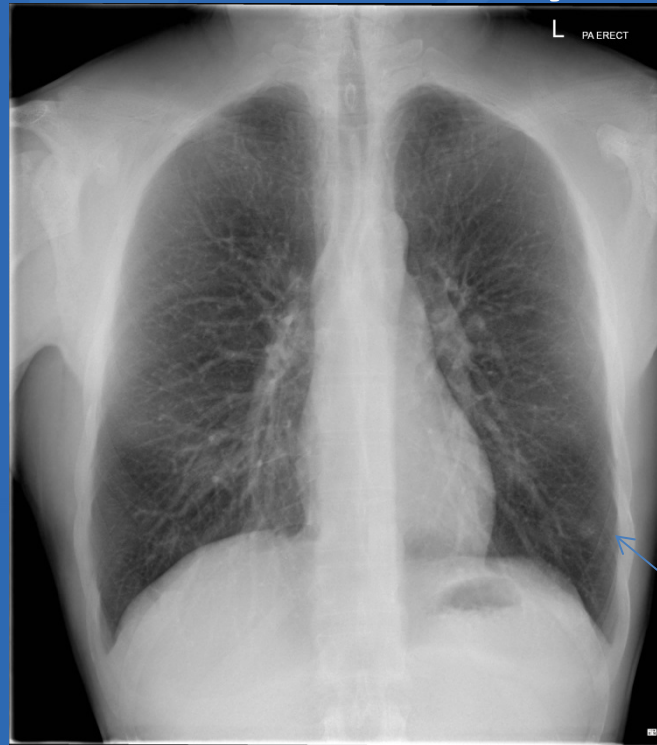
Case Study 2



Case Study 3



Case Study 3



Technology

Digital systems

New working culture.

Workforce Education

Imaging detector plates are fragile.
Detector care.

Procurement

Effective Comprehensive and justifiable capital bids.



DRLs and ALARP

IR(ME)R18

Dose Creep that has been recognised as a practice issue. Challenge for us to be mindful of. Mcfadden et al (2017)

References

- [https:// www.alamy.com](https://www.alamy.com) [Accessed 13.3.19]
- Mcfadden, Roding, T, de Vries,G, Benwell, M, Bijwaard J Scheurleer, J Digital Imaging radiographic practice in diagnostic radiography.An overview of current knowledge and practice in Europe Radiography (2018) pgs 137-141.
- <https://www.philips.co.uk/www>.[Accessed 13.3.19]
- The Independent Newspaper (2016) [://www.independent.co.uk/news/uk/home-news/homelessness-england-numbers-shelter-study worst- city-hotspots-london-manchester-rate-rough-sleeping-a7448521.html](://www.independent.co.uk/news/uk/home-news/homelessness-england-numbers-shelter-study-worst-city-hotspots-london-manchester-rate-rough-sleeping-a7448521.html)Homeless[Accessed 12^{.5.18}]
- The Royal College of Radiologists iRefer Making the best use of clinical radiology.(2017) The Royal College of Radiologists London.
- The Royal College of Radiologists and The Society and College of Radiographers. Team working in clinical Imaging –A joint document from the (2012) https://www.rcr.ac.uk/system/files/publication/field_publication_files/BFCR%2812%299_Team.pdf[accessed 12.5.18]
-

Any Questions?

