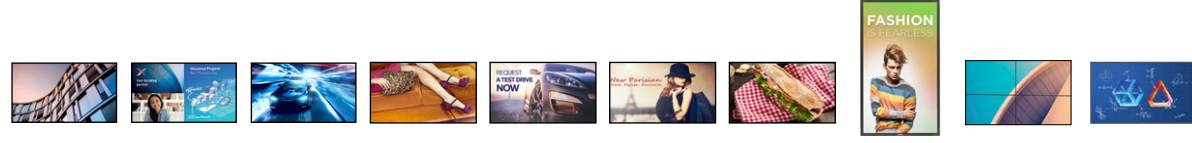


## Signage Features



Model	B-Line	C-Line	3010Q	30Q-Line	50Q-Line	D-Line	P-Line	H-Line	X-Line	T-Line **
CMND	✓	✓	✓	✓	✓	✓	✓	✓	✓	✓
CMND&Control	✓	✓	✓	✓	✓	✓	✓	✓	✓	✓
CMND&Create	✓	✓				✓	✓*	✓	✓*	✓
CMND&Deploy						✓	✓	✓*	✓*	✓
CMND&Calibrate										
Android	✓				✓	✓	✓	✓*	✓*	✓
Fallover			✓			✓	✓	✓	✓	✓
Clinical D Image			✓	✓	✓	✓	✓	✓	✓	✓
SmartPlayer	✓	✓		✓	✓	✓	✓	✓	✓	✓
SmartInsert			✓ (Only 65")			✓	✓	✓	✓	✓
SmartPower	✓	✓	✓	✓	✓	✓	✓	✓	✓	✓
SmartBrowser	✓	✓		✓		✓	✓	✓	✓	✓
WiFi	✓	✓			✓ (Optional)	✓	✓ (Optional)	✓*	✓*	✓
Memory Cache	✓	✓		✓		✓	✓	✓ (Only 55")		✓
QuadViewer					✓			✓ (Only 75")		✓
4G/LTE						✓ (Optional)	✓ (Optional)	✓*	✓*	✓ (Optional)
Wireless Screen-sharing	Chrome Cast Built-In	✓								
Google Play Store	✓									

\*Requires optional CRD50 OPS module  
\*\*Features may not be available on all models



### Public Venues

Maximize the viewing experience and generate revenue through advertising and promotion.



### Transportation

Guide travellers to their destination by using high visibility displays or interactive touch screens.



### Corporate

Communicate with your employees, welcome visitors, or impress new clients with a large format screen.



### Education

Improve communication with students, faculty, and visitors with everything from digital signage to interactive touchscreens.



### Retail

Upgrade the customer experience and promote your brand with dynamic, eye catching displays.



### Food & Beverage

Quickly communicate your menu or promote specials with attention grabbing digital menu boards.



# PHILIPS

Professional Display Solutions

Signage Displays



# Inspirational display solutions

## Product Overview 2020 H1- Signage

© 2020 Koninklijke Philips N.V. All rights reserved. Specifications are subject to change without notice. Trademarks are the property of Koninklijke Philips N.V. (Royal Philips) or their respective owners.

[philips.com/professionaldisplaysolutions](https://philips.com/professionaldisplaysolutions)



\*3 year advanced exchange warranty



Q-Line



H-Line



X-Line

Model	32BDL3010Q	43BDL3010Q	50BDL3010Q	55BDL3010Q	65BDL3010Q	50BDL3050Q	55BDL3050Q	65BDL3050Q	75BDL3050Q	86BDL3050Q	55BDL3202H	75BDL3003H	49BDL3005X	55BDL3005X/BDL5588XH	55BDL1005X	55BDL1007X	55BDL3105X	55BDL3107X									
Screen Size	80 cm (32")	108 cm (42")	125.7 cm (50")	138.7 cm (55")	163.9 cm (65")	125.73 cm (50")	138.7 cm (55")	163.9 cm (65")	189.27 cm (75")	217.4 cm (86")	139.7 cm (55")	189.3 cm (75")	123.2 cm (49")	138.7 cm (55")	138.7 cm (55")	138.7 cm (55")	138.7 cm (55")	138.7 cm (55")									
Backlight Type	Direct-Lit LED					Edge-Lit LED					Direct-Lit LED																
Placement	Landscape 18/7, Portrait 12/7			Landscape 18/7, Portrait 12/7																							
Resolution	1920x1080p			3840x2160p																							
Panel Technology	VA					IPS					SVA																
Contrast Ratio	1200:1	3000:1	4000:1																								
Dynamic Contrast Ratio	500,000:1																										
Response Time	8 ms	6.5 ms	8 ms			9 ms	8 ms																				
Viewing Angles	178/178 degree																										
Display Colors	16.7 Million			1.07 Billion			16.7 Million			1.07 Billion						16.7 Million			1.07 Billion								
Brightness	350 cd/m <sup>2</sup>																										
Power Consumption (EPA)	50 W	75 W	115 W	145 W	115 W	140 W	145 W	115 W	410 cd/m <sup>2</sup>	237 W	290 W	2500 cd/m <sup>2</sup>	382 W (typ)	110 W	110 W/175 W	175 W	700 cd/m <sup>2</sup>	500 cd/m <sup>2</sup>	700 cd/m <sup>2</sup>								
Video Input	DVI-I x1, HDMI (x2), USB, VGA (via DVI)		DVI-I x1, HDMI (x4), USB, VGA (via DVI)		4xHDMI 2.0, DVI, VGA via DVI, USB		USB, DVI-I x1, HDMI (x4), VGA (via DVI)		DVI-D, HDMI 2.0 (x2), VGA (Analogue D-Sub), USB		DVI-D, HDMI 2.0 (x4), VGA (Analogue D-Sub), USB, DisplayPort		*VGA, HDMI (x2), DVI, USB, DisplayPort, Component (RCA), Composite (RCA)*		*VGA (Analog D-Sub), DisplayPort (1.2), DVI-D, HDMI (x3), Component (RCA), Composite (RCA)*		*VGA, HDMI (2), DVI, DP, Component, Composite, USB, OPS*		*Component (RCA), Composite (RCA), DVI-D, HDMI (x2), VGA (Analogue D-Sub), DisplayPort (1.2)*								
Video Output	N/A																										
Audio Input	3.5 mm jack																										
Audio Output	Audio Left/Right (RCA)																										
Internal Speaker	2x10 W RMS																										
External Control	RJ45, RS232C (in/out) 2.5 mm jack, IR (in/out) 3.5 mm jack																										
Extra Connections	USB,			OPS		micro SD, 1xUSB 2.0, 1xUSB 3.0		micro SD, 2xUSB 2.0, 1xUSB 3.0, 1xUSB/2A, OPS										USB, OPS		AC-out, USB, OPS		AC out, OPS		AC out, OPS, RJ45 2-port hub		OPS	
Dimensions (WxHxD)	726.5x425.4x63.6 mm (T/L/R) 11.9 mm / (B) 17.2 mm	968.2x559.4x60.9 mm (T/L/R) 11.9 mm / (B) 14.7 mm	1123.6x646.7x69.2 mm (T/L/R) 11.8 mm / (B) 14.3 mm	1239.2x711.6x61.7 mm (T/L/R) 12.9 mm / (B) 14.7 mm	1458.7x834.7x81.6 mm (T/L/R) 13.9 mm / (B) 14.9 mm	1123.6x646.7x67.8 mm (T/L/R) 11.8 mm / (B) 14.3 mm	1239.2x711.6x61.7 mm (T/L/R) 12.9 mm / (B) 14.7 mm	1458.7x834.7x81.6 mm (T/L/R) 13.9 mm / (B) 14.9 mm	1676.6x955.7x3.8 mm (T/L/R/B) 15.2 mm	1927.9x109.89x85.9 mm	1243.2x714x137.9 mm (T/L/R/B) 15.8 mm	1681.2x955.6x142.4 mm	1077.6x607.8x103.8 mm (T/L) 2.35 mm, (R/L) 1.25 mm	1213.4x684.2x107.65 mm (T/L) 2.35 mm, (R/L) 1.2 mm	1211.4x682.2x98.5 mm (Even Bezel)												
Bezel Width	0.9mm (Even Bezel)																										
Vesa Mount	*100x100mm, 200x200mm, M4*	400x400 mm, M6		*400x400 mm, 200x200 mm, M6*		400x400 mm, M6		400x400 mm, M6		600x400 mm, M8		400x400, M6		600x400, M8		400x400 mm, M6		400x400 mm		400x400 mm, M6		400x400 mm					
Smart Insert Mount	N/A																										
Weight (in KG)	5.20 kg	8.8 kg	12.75 kg	15.82 kg	26.05 kg	12.8 kg	15.96 kg	24.8 kg	53.3 kg	63.79 kg	35.8 kg	65.5 kg	21.6 kg	26.5 kg	24.35 kg												

\*3 year advanced exchange warranty



B-Line



C-Line



T-Line



Model	50BFL2114	58BFL2114	70BFL2114	75BFL2114	55BDL6052C	65BDL8052C	75BDL8052C	86BDL8052C	10BDL3051T	24BDL4151T	43BDL4051T	55BDL4051T	65BDL3552T	75BDL3552T	86BDL3552T																					
Screen Size	126 cm (50")	146 cm (58")	177 cm (70")	189 cm (75")	55"	65"	75"	86"	25.6 cm (10")	59.94 cm (24")	108.0 cm (43")	138.8 cm (55")	65"	75"	86"																					
Backlight Type	Direct-Lit LED				EDGE LED				Edge-Lit LED																											
Placement	Landscape 18/7				Landscape & Portrait 24/7				Landscape 18/7																											
Resolution	3840x2160p				3840x2160p				1280 x 800p																											
Panel Technology	VA				IPS				VA																											
Contrast Ratio	5000:1				1200:1				800:1																											
Dynamic Contrast Ratio	5000:1				500000:1				500,000:1																											
Response Time	8 ms		9.5 ms		8 ms		8ms		30 ms		3.5 ms		12 ms		8 ms																					
Viewing Angles	178/178 degree				178/178 degree				178/178 degree																											
Display Colors	1.07 Billion				1.07 Billion				16.7 Million																											
Brightness	350 cd/m <sup>2</sup>				380 cd/m <sup>2</sup>				500 cd/m <sup>2</sup>				350 cd/m <sup>2</sup>																							
Protective Glass	yes																																			
Touch Technology	P-CAP Multitouch																																			
Touch Points	10																																			
Power Consumption (EPA)	TBD																																			
Video Input	HDMI (x2), USB				HDMI (x3), USB				HDMI (x2), USB				HDMI (x3), USB																							
Video Output	N/A																																			
Audio Input	N/A																																			
Audio Output	3.5 mm jack headphone out stereo, 3.5 mm jack mono pre-amp (1.5W 8Ohm)				DVI, DP, HDMI				Jack 3.5mm				3.5mm jack mic input				N/A																			
Internal Speaker	2x 10W RMS																																			
External Control	RJ45 (JEDI/JAPIT), RJ48 (Serial Xpress + IR in/out), Crestron/Extron/Neets compatible over IP				2 x 20 W				RJ45 (PoE)				RJ45 (PoE+)				RJ45, IR (in/out) 3.5 mm jack, RS232C (in/out) 2.5 mm jack																			
Extra Connections	1x RF DVB C/T/T2, CI Slot, 1xUSB 2.0, 1xUSB 3.0, 12V DC out (1.5A)				OPS, USB 3.0, USB 2.0				USB 3.0, USB 2.0				2xUSB, Micro SD, mPCIe slot																							
Dimensions (WxHxD)	1128x655x81/86 mm (T/L/R) 14.9 mm / (B) 22.0 mm	1302 x 760 x 81/86 mm (T/L/R) 14.9 mm / (B) 22.0 mm	1584 x 888 x 66/88 mm (T/L/R) 15.7 mm / (B) 22.7 mm	1683 x 966 x 94 mm (T/L/R) 15.2 mm / (B) 20.0 mm	1264.4x735.2x96.8mm	1979.1x860.1x101.2mm	1703.8x982x99.7 mm	1949x1120x93.0 mm	261x167.2x29 mm (L/R) 19.77 mm / (B/T) 13.56 mm	566.5x361.1x49.2 mm (T) 30.8 mm / (L/R) 22.6 mm / (B) 33.9 mm	1002.6x590.8x91.4 mm (T/L/R/B) 29.2 mm	1271.0x741.8x91.4 mm (T/L/R/B) 29.2 mm	1494.30x869.40x106.80 mm	1715.50x993.70 x108.70 mm (T/L/R/B) 16.3 mm	1961.00mmx1132.30x180.40 mm	600x400, M8																				
Bezel Width	(T/L/R/B) 1.5 mm																																			
Vesa Mount	200x200 mm, M6	400x300 mm, M6	400x200 mm, M8	600x400 mm, M8	400x400, M8				600x400, M8				75x75 mm, M4				100x100 mm, M4				400x400 mm, M6															
Smart Insert Mount	N/A																																			
Weight (in KG)	TBD				TBD				46.3 kg				69.2 kg				78.2 kg				0.71 kg				4.0 kg				19.4 kg				31 kg			



## D-Line

\*3 year advanced exchange warranty

Model	32BDL4031D	43BDL4031D	49BDL4031D	55BDL4031D	32BDL4051D	43BDL4051D	49BDL4051D	55BDL4051D	49BDL4150D	55BDL4150D	65BDL4150D	75BDL4150D	86BDL4150D	98BDL4150D				
Screen Size	80 cm (32")	108 cm (43")	123.2 cm (49")	138.7 cm (55")	80 cm (32")	108 cm (43")	123.2 cm (49")	138.7 cm (55")	123.2 cm (49")	138.7 cm (55")	163.91 cm (65")	189.3 cm (75")	217.4 cm (86")	247.7 cm (98")				
Backlight Type	Direct-Lit LED		Edge-lit LED		Direct-Lit LED		Edge-Lit LED											
Placement	Landscape (24/7) & Portrait (24/7)																	
Resolution	1920x1080p								3840x2160p									
Panel Technology	IPS																	
Contrast Ratio	1100:1																	
Dynamic Contrast Ratio	500,000:1																	
Response Time	8 ms	12 ms			10 ms	12 ms			8 ms			6 ms		8 ms				
Viewing Angles	178/178 degree																	
Display Colors	16.7 Million																	
Brightness	400 cd/m <sup>2</sup>	450 cd/m <sup>2</sup>			400 cd/m <sup>2</sup>	450 cd/m <sup>2</sup>			1.07 Billion									
Power Consumption (EPA)	110 W (max)	65 W	75 W	85 W	60 W	65 W	75 W	85 W	150 W		99 W	183 W	220 W (typ)	372 W				
Video Input	DisplayPort 1.2 x 1, DVI-I x 1, HDMI (x 2)								DVI-D, VGA (Analogue D-Sub), DisplayPort (1.2), HDMI 2.0 (x 3)		DisplayPort, DVI-D, HDMI (x3), VGA (Analogue D-Sub)							
Video Output	DisplayPort 1.2 x 1, DVI-I x 1																	
Audio Input	3.5 mm jack																	
Audio Output	3.5 mm jack								SPDIF, 3.5 mm jack, External speaker connection				Audio Left/Right (3.5 mm jack), External speaker connector, SPDIF out					
Internal Speaker	2x10 W RMS																	
External Control	RJ45, RS232C (in/out) 2.5 mm jack, IR (in/out) 3.5 mm jack																	
Extra Connections	N/A				mPCIe slot, micro USB, USB 3.0, USB 2.0, micro SD				micro USB, USB 3.0, USB 2.0, micro SD, mPCIe				*Micro USB (x 1) (OTG), USB 2.0, USB 3.0, mPCIe					
Dimensions (WxHxD)	724.8x424.3x 64.1 mm	965.0x559.3x45.5 mm	1097.6x633.9x45.5 mm	1233.4x710.3x45.5 mm	724.8x424.3x 64.1 mm	965.0x559.3x45.5 mm	1097.6x633.9x45.5 mm	1233.4x710.3x45.5 mm	1104.2x637x65.4 (wall mount) / 69.6 (handle) mm		1240.0x713.4x64.4 (wall mount) / 69.6 (handle) mm		1452.0x833.1x63.5 mm	1676.6x955.0x62.8 mm	1927.9x1098.9x85.9 mm	2193.2x1248.2x88.3 mm		
Bezel Width	(T/L/R) 10.8 mm, (B) 15.7 mm	(T/L/R) 9.6 mm, (B) 15.7 mm			(T/L/R) 10.8 mm, (B) 15.7 mm	(T/L/R) 9.6 mm, (B) 15.7 mm			(T) 12.2 mm, (R/L) 12.7 mm; (B) 15.8 mm		(T/L/R) 9.5 mm/(B) 15.6 mm	(T/L/R/B) 15.2 mm		(T/L/R/B) 16.0 mm				
Vesa Mount	200x200 mm, M6		400x400 mm, M6			200x200 mm, M6		400x400 mm, M6										
Smart Insert Mount	N/A																	
Weight (in KG)	6.15 kg	10.41 kg	14.8 kg	18 kg	6.15 kg	10.41 kg	14.8 kg	18 kg	20.9 kg	25 kg	100x100 mm, 100x200 mm		100x200 mm		36.5 kg	55 kg	63.8 kg	91.4 kg



## P-Line



\*3 year advanced exchange warranty

Model	42BDL5055P	42BDL5057P	49BDL5055P	49BDL5057P	55BDL5055P	55BDL5057P
Screen Size	106.5 cm (42")		123.2 cm (55")		138.8 cm (55")	
Backlight Type	E-LED					
Placement	Landscape (24/7), Portrait (24/7)					
Resolution	1920x1080p					
Panel Technology	IPS					
Contrast Ratio	1300:1					
Dynamic Contrast Ratio	500,000:1					
Response Time	8 ms					
Viewing Angles	178/178 degree (H/V)					
Display Colors	1.07 Billion					
Brightness	500 cd/m <sup>2</sup>	700 cd/m <sup>2</sup>	500 cd/m <sup>2</sup>	700 cd/m <sup>2</sup>	500 cd/m <sup>2</sup>	700 cd/m <sup>2</sup>
Protective Glass						
Touch Technology						
Touch Points						
Power Consumption (EPA)	71 W	83 W	82 W	100 W	91 W	96 W
Video Input	DisplayPort, DVI-I, HDMI (x2), VGA (via DVI)					
Video Output	DisplayPort, DVI-I, VGA (via DVI)					
Audio Input	Audio Left/Right (3.5 mm jack)					
Audio Output	Audio Left/Right (3.5 mm jack)					
Internal Speaker	2x10 W RMS					
External Control	RJ45, RS232C (in/out) 2.5 mm jack, IR (in/out) 3.5 mm jack					
Extra Connections	Micro SD, Micro USB, mPCIe, USB/2A, OPS					
Dimensions (WxHxD)	946.94x540.96x56.8 mm		1092.8x623.0x56.8 mm		1228.6x699.4x56.8 mm	
Bezel Width	(T/L/R/B) 6.5 mm					
Vesa Mount	200x200 mm, M6		N/A		400x400 mm, M6	
Smart Insert Mount	N/A					
Weight (in KG)	15.5 kg		19 kg		25.2 kg	